

May 03, 2005 - Press Release

SIMONA has new system components for the repair of sewer pipes

From 25 to 29 April 2005 the focus of attention for visitors to IFAT, the water and wastewater industry's world exhibition, was again on new projects, technologies and services. SIMONA AG presented its new system components made of PE 80/PE 100 for the repair of sewer pipes.

The focus was on the integral, watertight internal and external service pipe connections for electrically weldable connection to the main sewer up to 1000 mm dia. Another highlight presented by SIMONA was the electrically weldable, one-piece shaft connection made of polyethylene, for optimum connection to concrete shafts.

The fourth product innovation on display were pipes with integral electrofusion joints, for watertight welding of pipe modules without electric welding sockets which increase outside diameter.

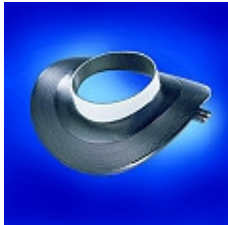
Together with SPC protective jacket pipes and pressure pipes in PE 80 and PE 100, coextruded PE 80 sewer pipes with a light grey inside surface and PE 80 ovoid ducts SIMONA thus offers a comprehensive range of products both for open and trenchless laying of new pipes and for the repair of drinking water pipes and sewer pipes.

To simplify the planning of piping systems SIMONA has brought out a new electronic planning aid. The SIMONA® SIMCAT 3.0 CD-ROM contains not only the entire range of products, including gross prices, but also application-related tender modules as well as a CAD database.



Product innovations in detail

Internal service pipe connection



SIMONA's new internal service pipe connection can be integrated within the system by means of electrofusion welding, thus offering an absolutely tight and secure repair of facility service laterals that are connected to existing or rehabilitated waster-water systems a tangible benefit for trenchless sewer repairs.

The internal service connection is available from stock in dimensions up to 450 mm. Connectors in dimensions beyond 450 mm can be supplied upon request. Joining of internal service connections is performed by means of a saddle-integrated heating spiral and in accordance with the relevant DVS guidelines.

External service pipe connector



In the case of open-trench installation, the external service pipe connector that joins piping systems to the main sewer is a particularly viable option. With feed connections in DN 150 and DN 200, SIMONA supplies saddles for pipes up to 1000 mm diameter as well as for special geometries such as ovoid profile.

Here too, the components are joined by means of electrofusion welding with an integrated heating spiral, based on DVS guidelines.



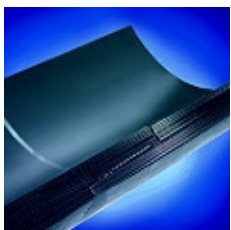
Electrofusible shaft connection



The electrofusible shaft connection is truly unique. As part of the initial production process, it is concreted into the wall of the sewer shaft by the shaft manufacturer according to the dimensional structure of the main sewer pipes, thereby guaranteeing an absolutely tight connection of the relevant pipe end with the shaft sockets.

The shaft connection is achieved by means of two connectors on the outer face of the socket.

PE pipe modules with integrated heating spirals for electrofusion welding



The system solution developed by the company also include SIMONA® PE pipe modules with integrated heating spirals for electrofusion welding. One of the key benefits of this welding method, which is guaranteed to withstand pressures of up to 0.5 bar and partial pressure in accordance with DIN EN 1610, is that the pipes can be joined together perfectly flush to create an absolutely leaktight fit without any changes to the outer circumference, as is the case with external electrofusion sockets. This solution makes for efficient, space-saving and hydraulically optimised rehabilitation of wastewater systems.

Further Information:

SIMONA AG

Marketing Department

Teichweg 16

D - 55606 Kirn

Germany

Phone: +49 (0) 67 52 14-383

Fax: +49 (0) 67 52 14-738

marketing@simona.de